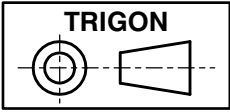
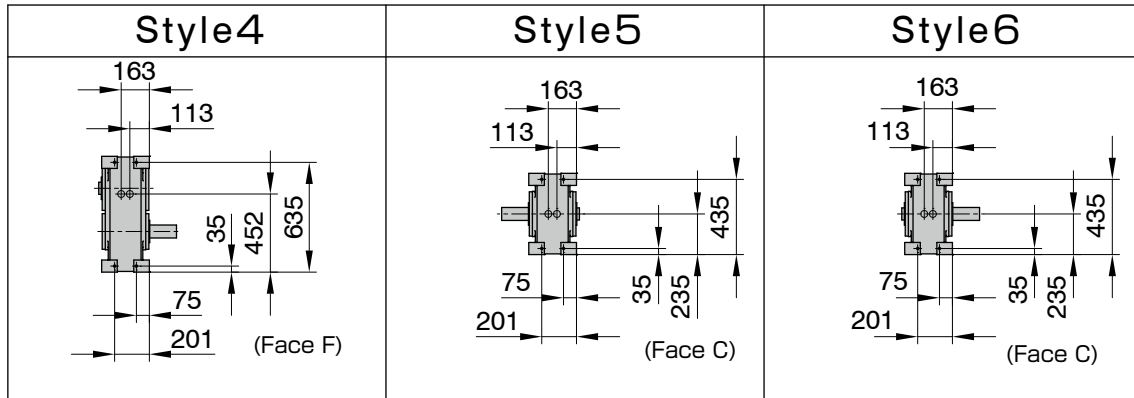
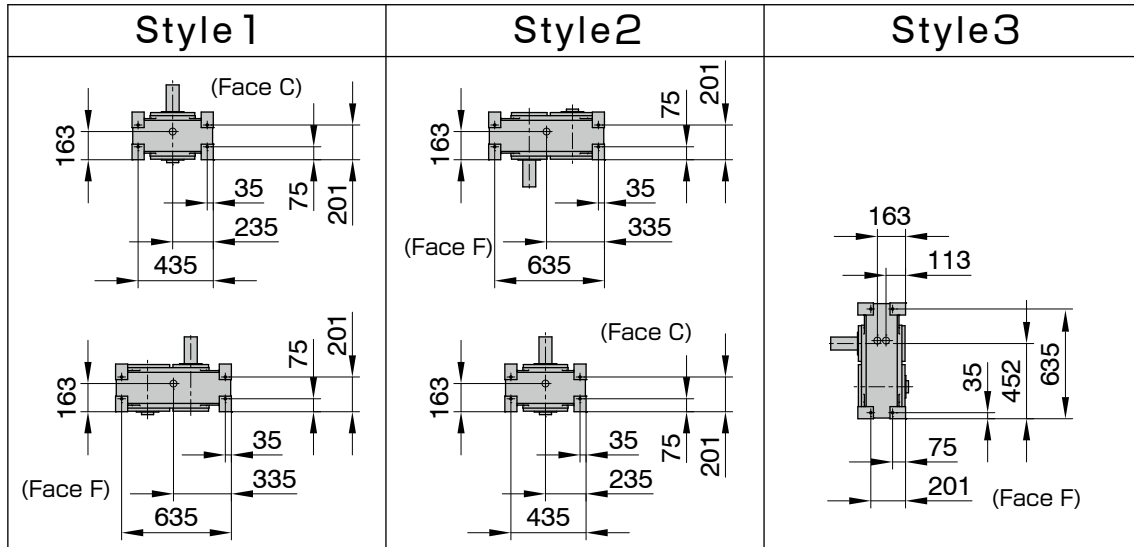


The keyway position of the input shaft in the drawing suggests the center of dwell period.





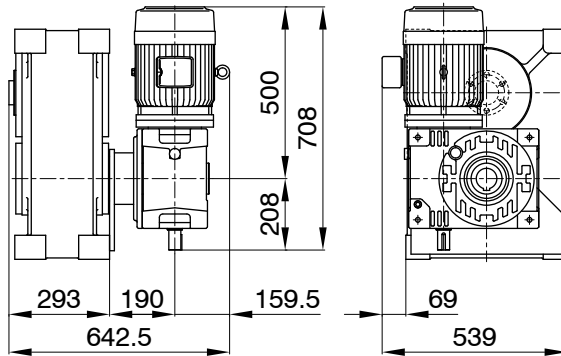
### Additional Information

Filler, Drain(black circle)	Rc1/2
Level (white circle)	$\phi$ 40
Rough Product Weight	200kg
Rough Lubricating Oil Capacity	14.0 Liters
Mounting Tapped Holes	Machining the specified faces upon request
Mounting Through-holes	Machining the specified faces upon request

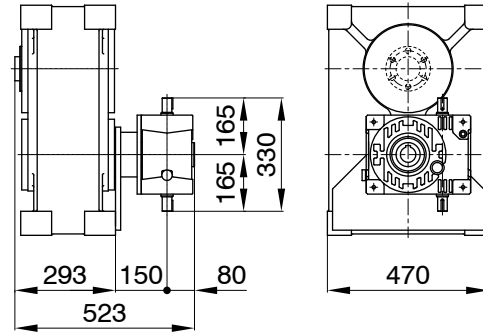
# PI/PO-250F

# Mounting Examples of Optional Parts

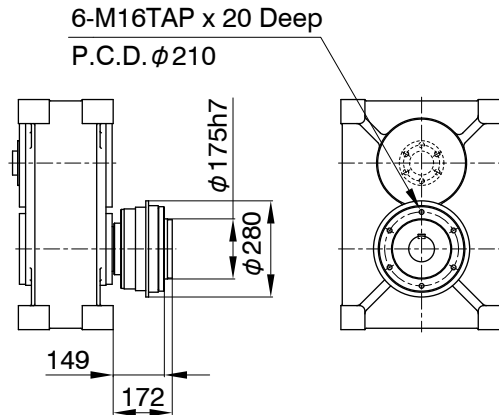
PI-250F  
MRA1-37-125



PI-250F  
RA2-100



PI-250F  
TB-326



### Additional Notes

- MA series worm reducer MAO100 and 125 can be mounted.
- Mounting positions of a drive unit is standardized as 8 different pattern.
- MYTORQ torque limiter 300 series can be mounted.
- Autoflex coup@lings can be mounted.
- Autogard torquelimiter 400 series or Autoflex couplings can be mounted on the input shafts of a worm reducer.