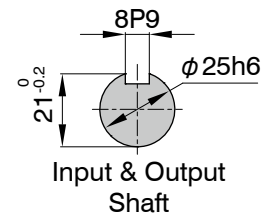
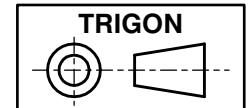
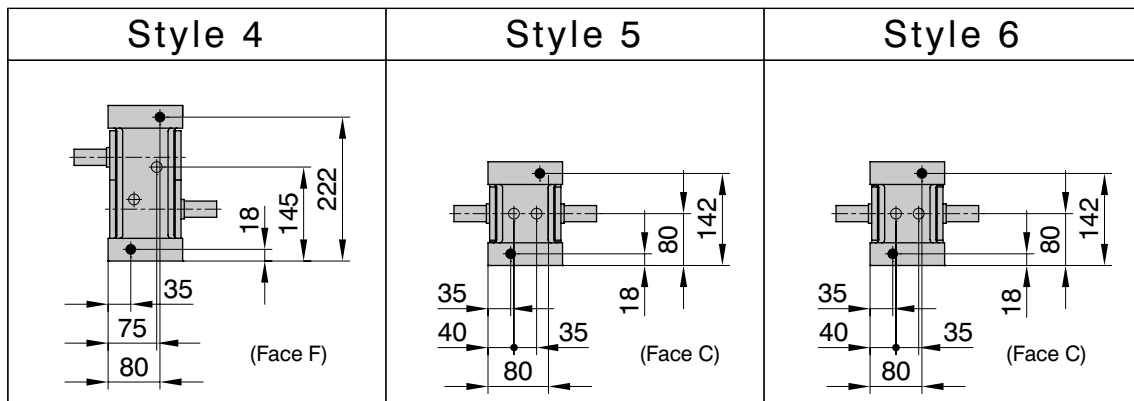
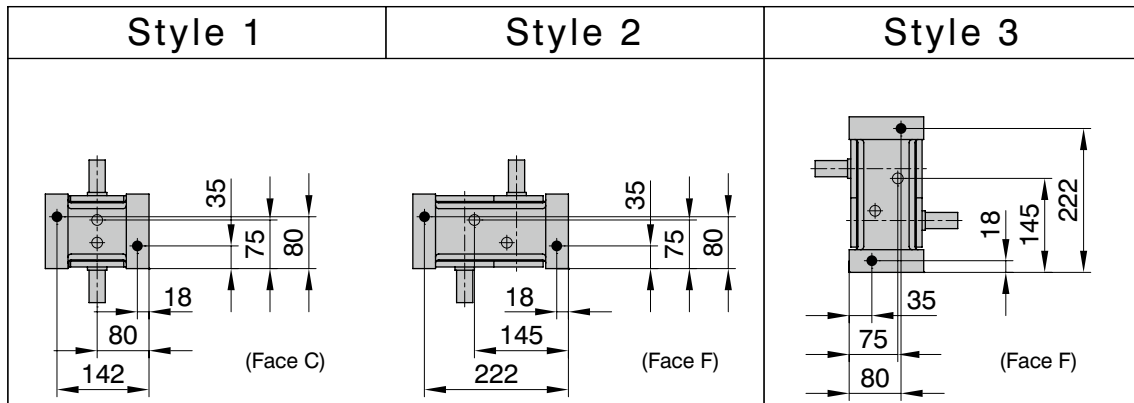


2x4-M8TAP x 16 Deep
(Face A,B)



The keyway position of the input shaft in the drawing suggests the center of dwell period.



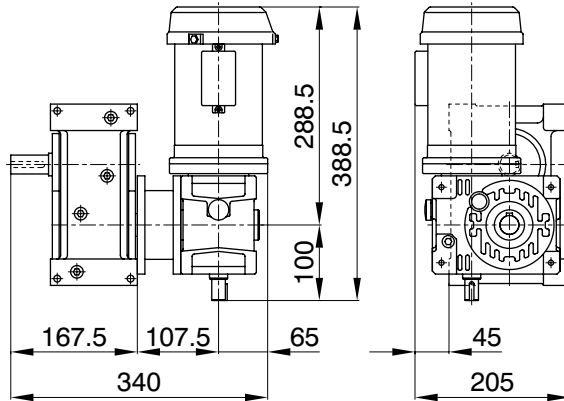


Additional Information	
Filler, Drain (black circle)	Rc3/8
Level (white circle)	Rc3/8
Rough Product Weight	17.1kg
Rough Lubricating Oil Capacity	1.0 Liters
Mounting Tapped Holes	Face A & B
Mounting Through-holes	Face C - F

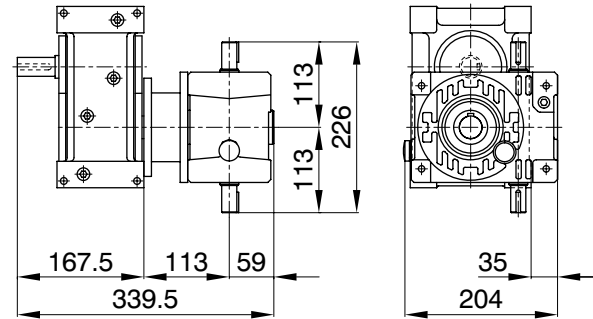
PI/PO-80S

Mounting Examples of Optional Parts

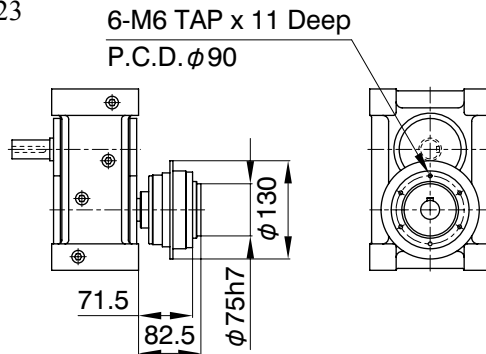
PI-80S
MRA1-04-50



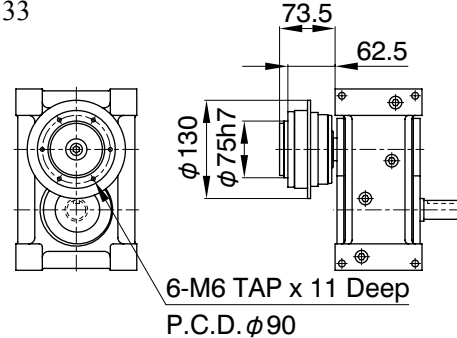
PI-80S
RA2-63



PI-80S
TB-323



PI-80S
TA-333



Additional Notes

- MA series worm reducer MAO50 and 63 can be mounted.
- Mounting positions of a drive unit is standardized as 8 different pattern.
- MYTORQ torque limiter 300 series can be mounted.
- Autoflex couplings can be mounted.
- Autogard torque limiter 400 series or Autoflex couplings can be mounted on the input shafts of a worm reducer.