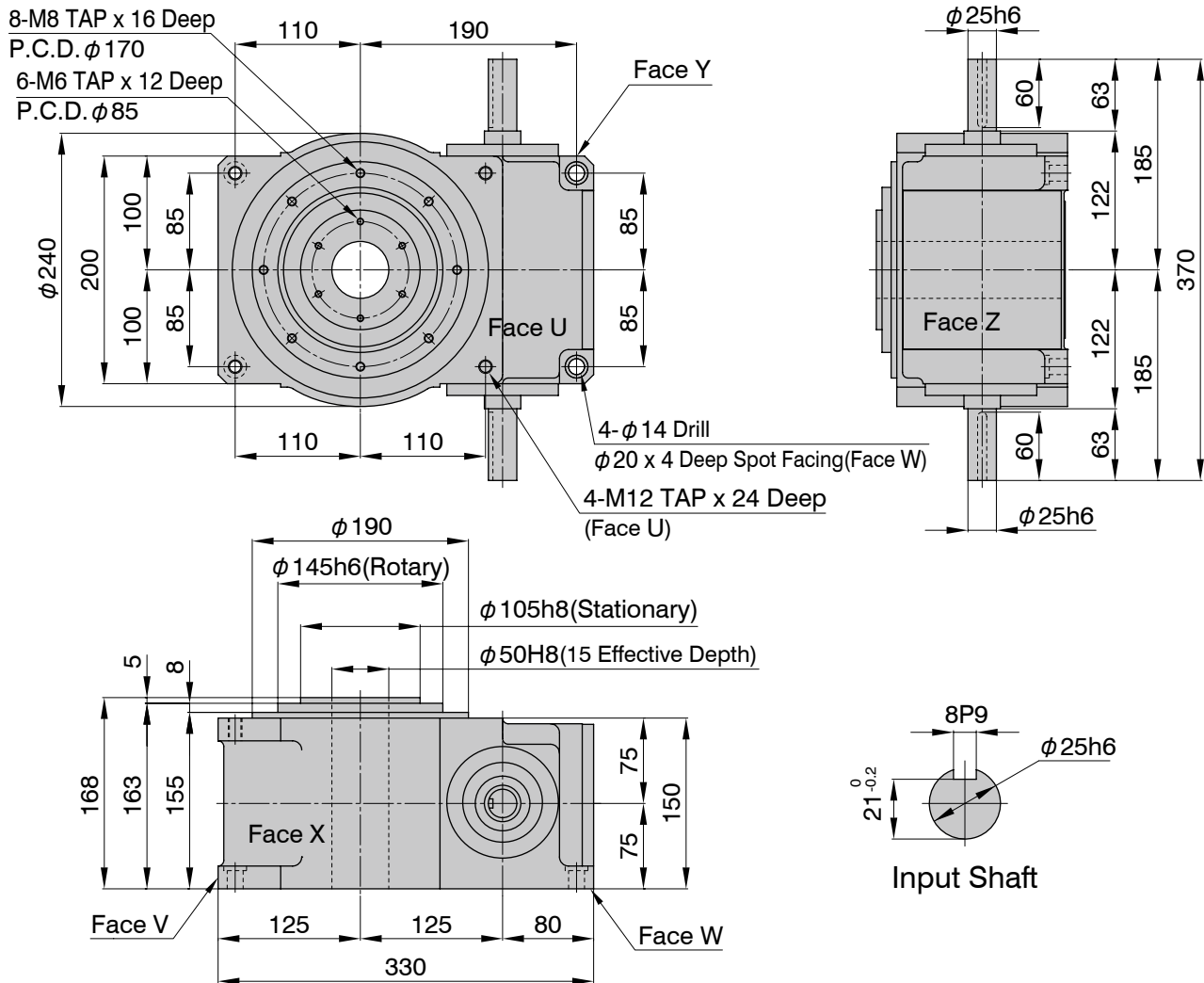
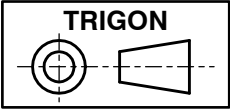


# TLX-125F

# Dimensions

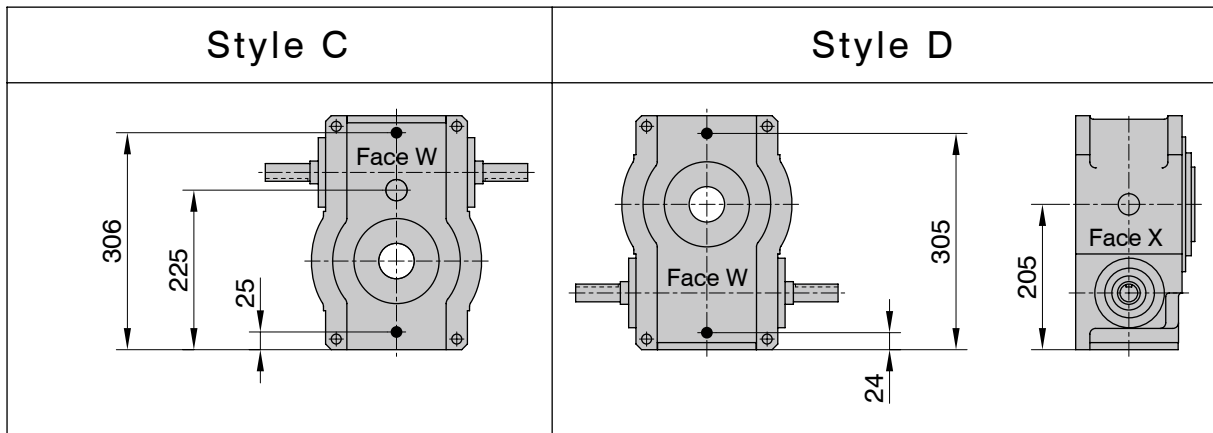
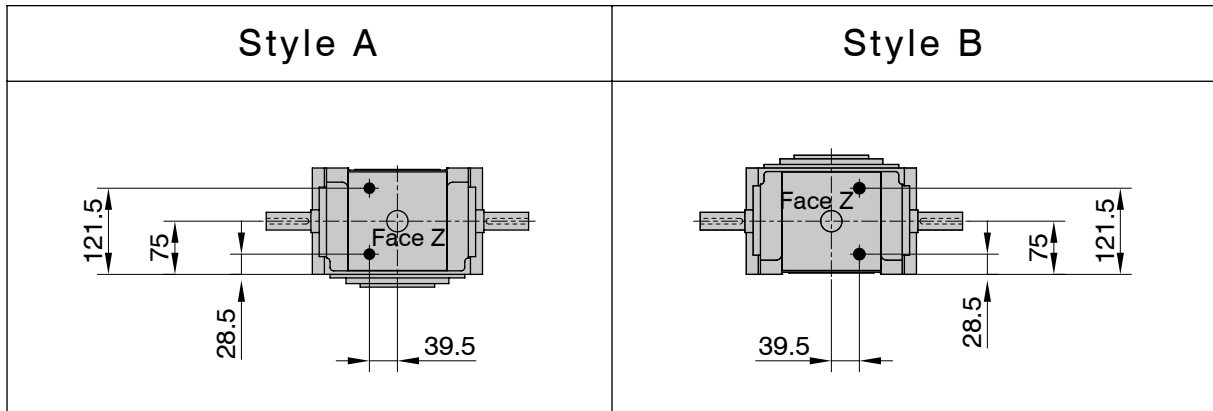


The keyway position of the input shaft in the drawing suggests the center of dwell period.



# TLX-125F

## Style by Oil Plug Machining Position

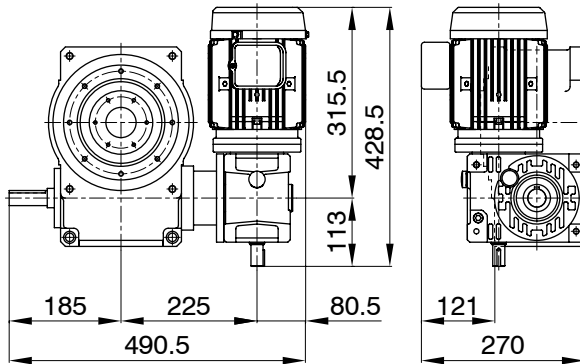


Additional Information	
Filler, Drain (black circle)	Rc3/8
Level (white circle)	Φ30
Rough Product Weight	43kg
Rough Lubricating Oil Capacity	4.0 Liters
Mounting Tapped Holes	Machined at Face U, W

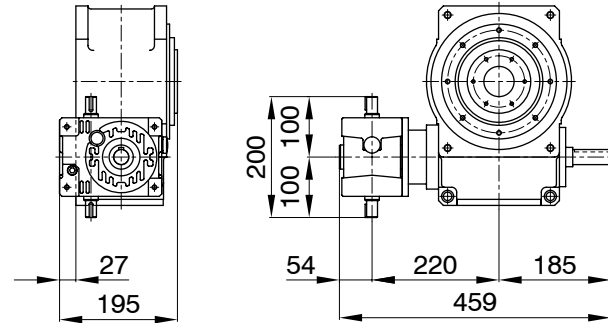
# TLX-125F

## Mounting Examples of Optional Parts

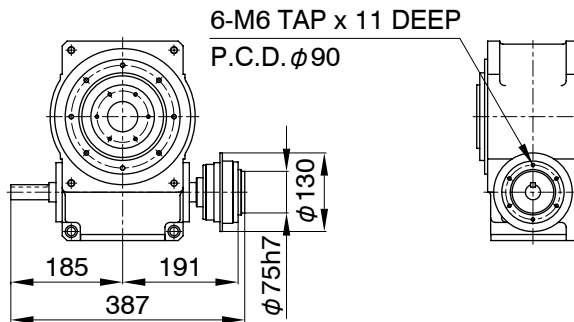
TLX-125F  
MRA1Y-07-63



TLX-125F  
RA2X-50



TLX-125F  
TY-323



### Additional Notes

- MA series worm reducer MAO50 and 63 can be mounted.
- Mounting positions of a drive unit is standardized as 16 different pattern.
- MYTORQ torque limiter 830 can be mounted on the TLX output shaft and 300 series can be mounted on the input shaft.
- Autoflex couplings can be mounted.
- Autogard torque limiter 400 series or Autoflex couplings can be mounted on the input shafts of a worm reducer.