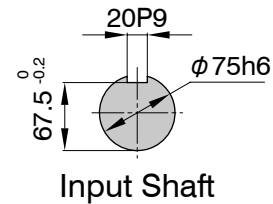
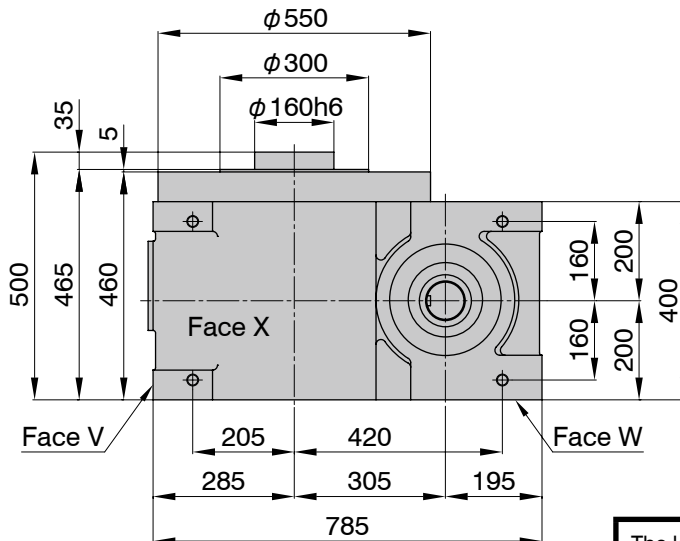
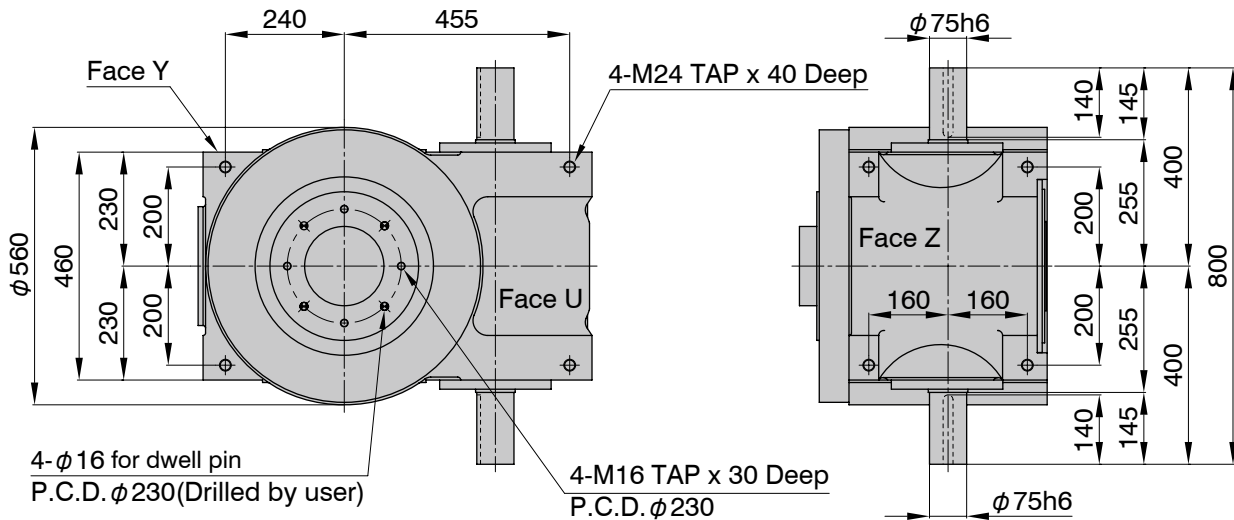
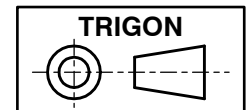


TLX-305S

Dimensions

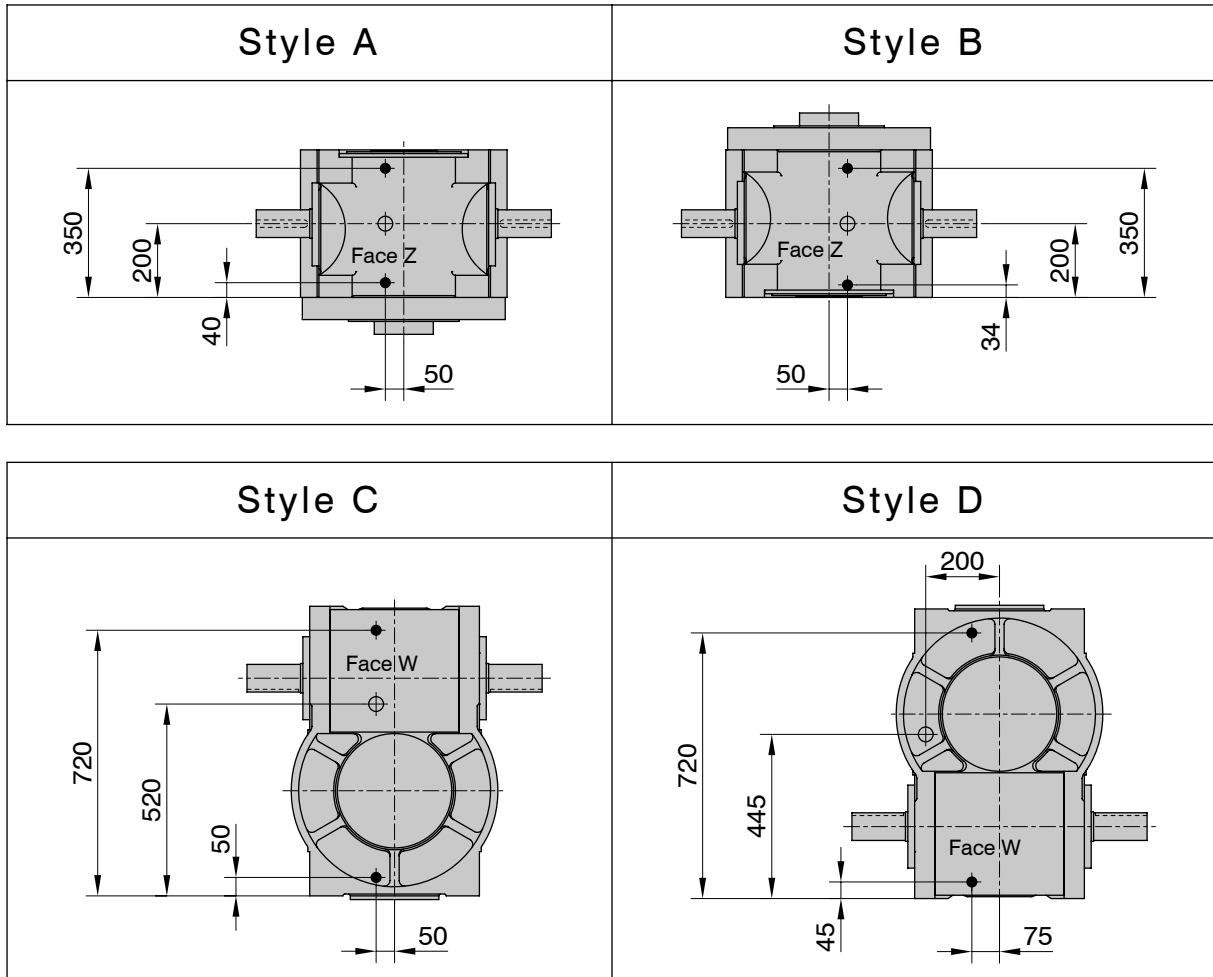


The keyway position of the input shaft in the drawing suggests the center of dwell period.



TLX-305S

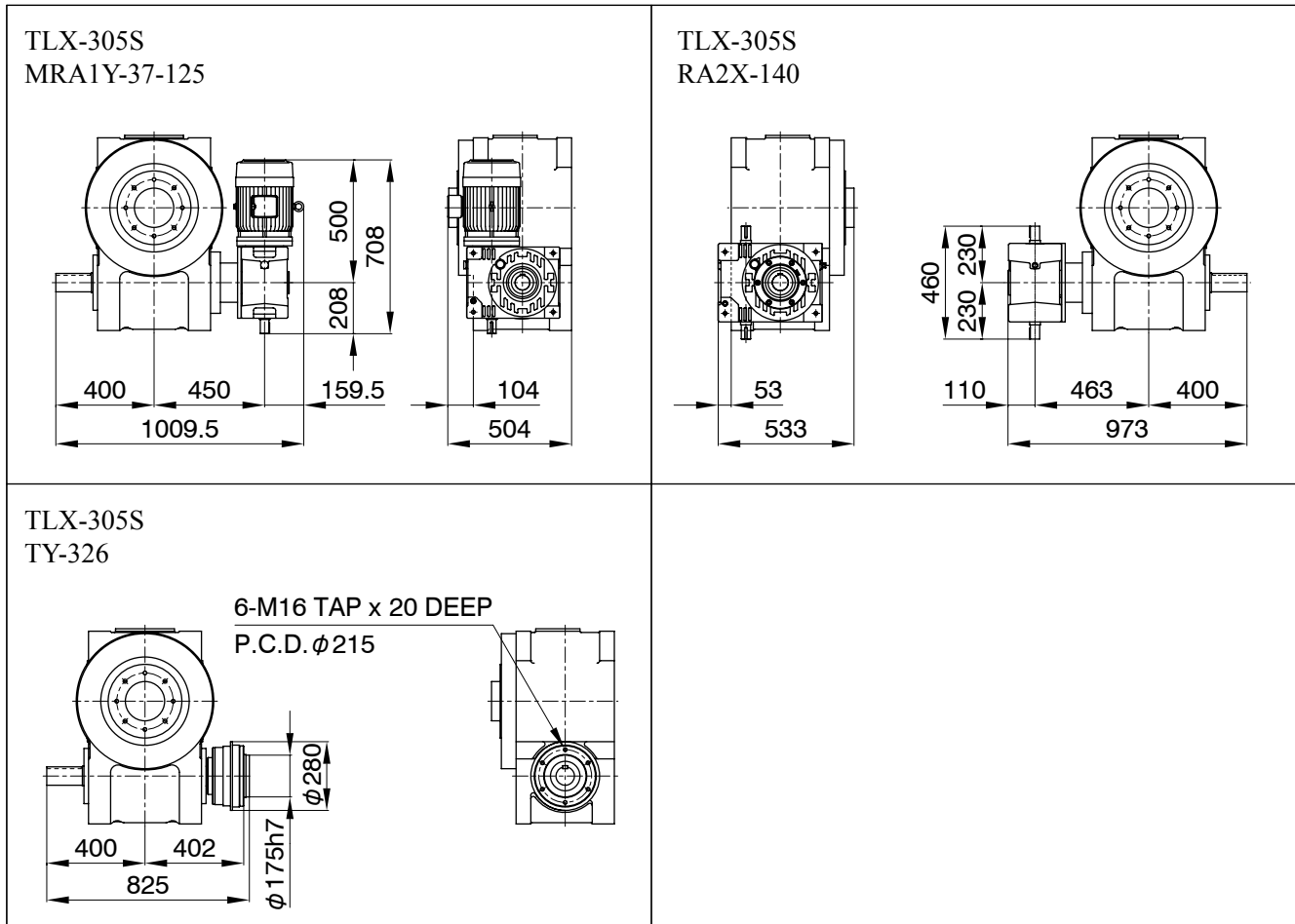
Style by Oil Plug Machining Position



Additional Information	
Filler, Drain (black circle)	Rc3/8
Level (white circle)	Φ40
Rough Product Weight	450kg
Rough Lubricating Oil Capacity	31.0 Liters
Mounting Tapped Holes	Machining the specified faces upon request

TLX-305S

Mounting Examples of Optional Parts



Additional Notes

- MA series worm reducer MAO100, 125 and 140 can be mounted.
- Mounting positions of a drive unit is standardized as 16 different pattern.
- MYTORQ torque limiter 300 series can be mounted. Please contact us if a MYTORQ torque limiter is required to mount on the output shaft.
- Autoflex couplings can be mounted.
- Autogard torquelimiter 400 series or Autoflex couplings can be mounted on the input shafts of a worm reducer.
- The hollow shaft can be specified as a special. (Max. hollow dia. $\phi 150$)