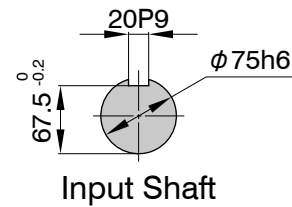
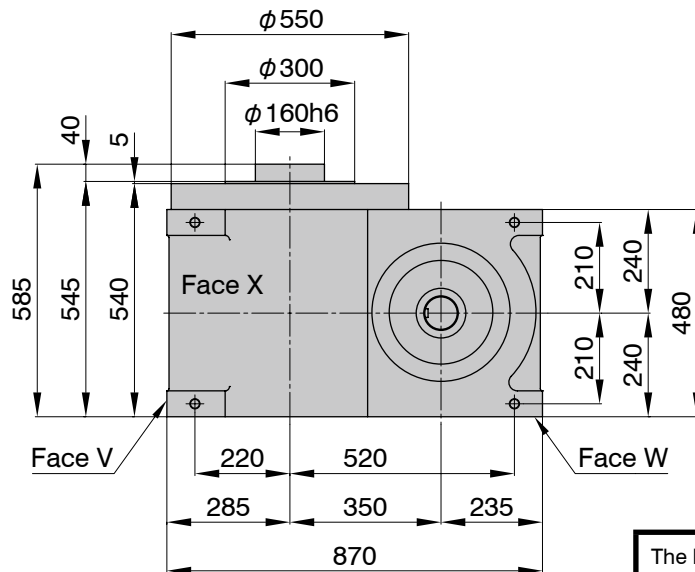
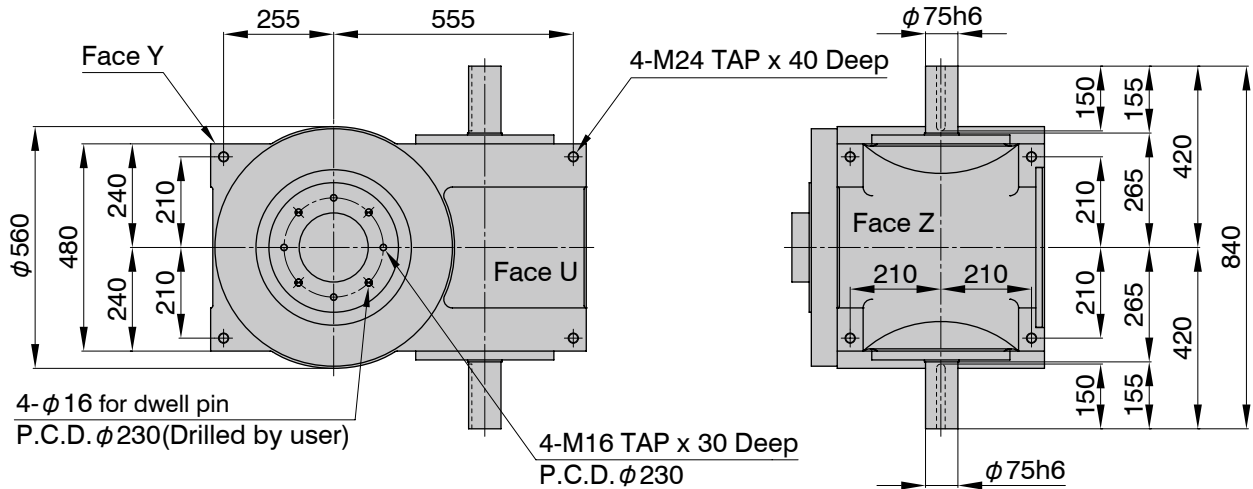
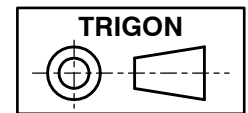


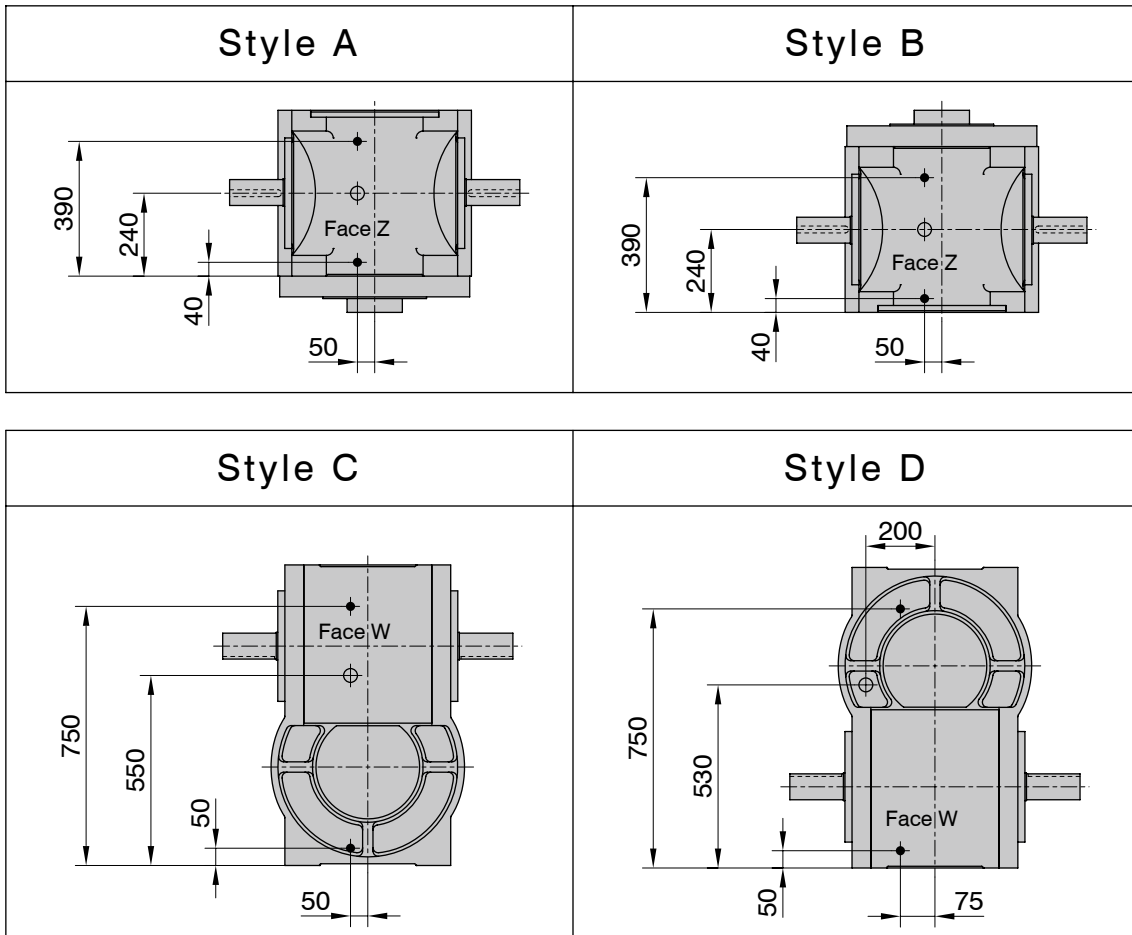
TLX-350S

Dimensions



The keyway position of the input shaft in the drawing suggests the center of dwell period.



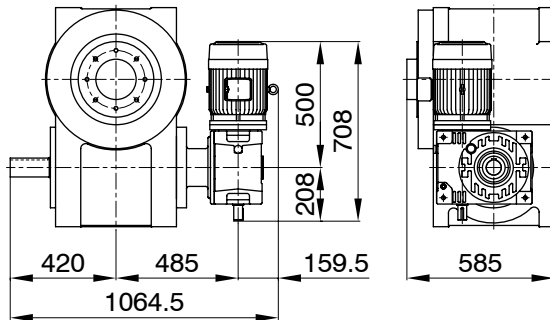


Additional Information	
Filler, Drain (black circle)	Rc3/4
Level (white circle)	Φ40
Rough Product Weight	550kg
Rough Lubricating Oil Capacity	42.0 Liters
Mounting Tapped Holes	Machining the specified faces upon request

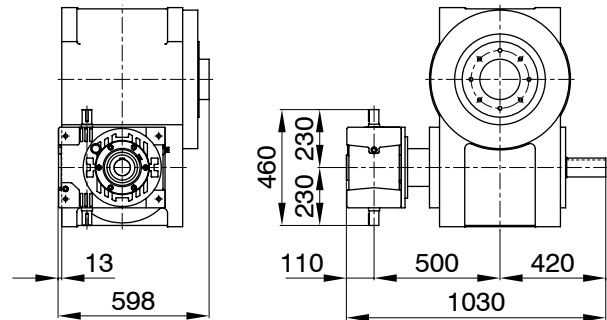
TLX-350S

Mounting Examples of Optional Parts

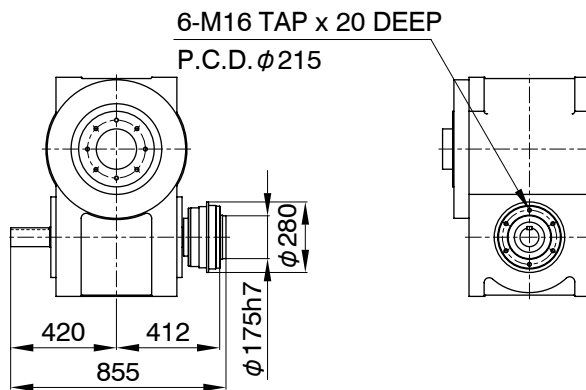
TLX-350S
MRA1Y-37-125



TLX-350S
RA2X-140



TLX-350S
TY-326



Additional Notes

- MA series worm reducer MAO100, 125 and 140 can be mounted.
- Mounting positions of a drive unit is standardized as 16 different pattern.
- MYTORQ torque limiter 300 series can be mounted. Please contact us if a MYTORQ torque limiter is required to mount on the output shaft.
- Autoflex couplings can be mounted.
- Autogard torque limiter 400 series or Autoflex couplings can be mounted on the input shafts of a worm reducer.
- The hollow shaft can be specified as a special. (Max. hollow dia. $\phi 125$)